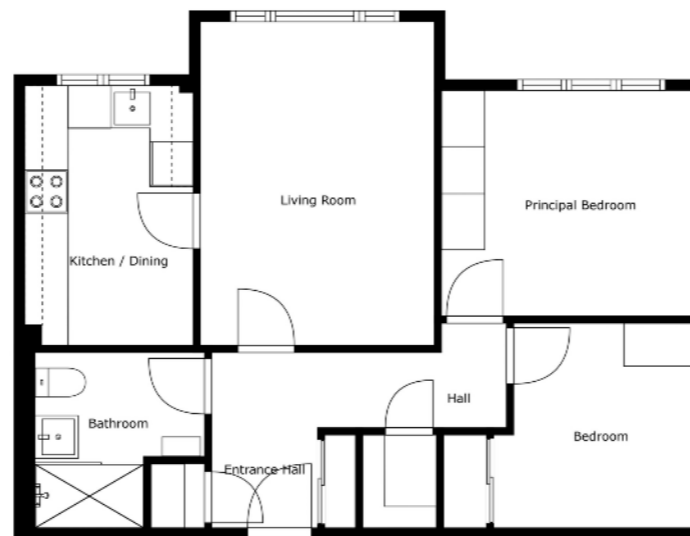


# Outside

Communal gardens. Ample parking for residents and visitors.

TEMPLETON  
ROBINSON

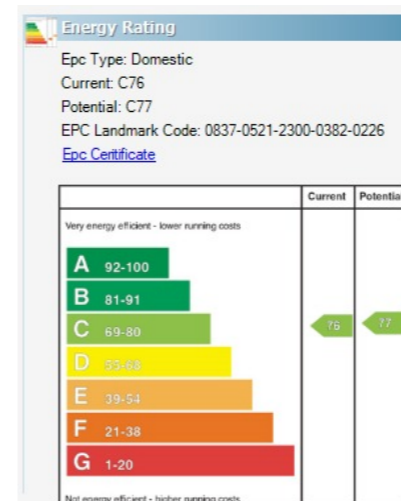
TEMPLETON  
ROBINSON



Sizes And Dimensions Are Approximate. Actual May Vary.



North Down - 028 90 42 4747  
 Lisburn Road - 028 90 66 3030  
 Ballyhackamore - 028 90 65 0000  
 Lisburn - 028 92 66 1700  
[www.templetonrobinson.com](http://www.templetonrobinson.com)



These particulars do not constitute any part of an offer or contract. None of the statements contained in these particulars are to be relied on as statements or representations of fact and intending purchasers must satisfy themselves by inspection or otherwise to the correctness of each of the statements contained in these particulars. The Vendor does not make or give, neither Templeton Robinson, nor any person in its employment has any authority to make or give, any representation or warranty whatever in relation to this property. All dimensions are taken to nearest 3 inches.



Roseville Apartments is well-appointed, purpose-built apartment complex specifically constructed for those over 55 years of age and has quickly become established as one of the most highly regarded developments of its type. Apartment 3 is a notably bright and spacious ground floor apartment benefitting from a sunny south facing aspect. Accommodation comprises hallway, living room, kitchen with dining area, two bedrooms plus modern shower room. Catering for its residents' every need, there is a part time warden in attendance and not omitting to mention the building is wheelchair accessible. The complex is further enhanced by residents' lounge / TV room with kitchen plus communal gardens and ample parking.

A highly desirable and convenient location, within proximity to a range of amenities and attractions; Beautiful coastal walks on your doorstep, Carnalea Golf Club, plus various shops, cafes and churches. Bangor, Crawfordsburn and Helen's Bay are all a short drive away. We anticipate demand to be high and so early viewing is recommended.

Offers Around  
£94,950

Apt 3,  
Roseville Apartments,  
BANGOR,  
BT19 1DZ

Viewing by  
appointment with  
& through agent  
028 9042 4747



# Apt 3 Roseville Apartments, BANGOR, BT19 1DZ

## Property Features

Highly regarded apartment complex for the Over 55s

Ground floor apartment

Hallway

Living Room

Kitchen with dining area

Two well-proportioned bedrooms

Recently installed shower room

Economy 7 heating

uPVC frame double glazed windows

Part-time Warden and 24 hour Helpline, building is wheelchair friendly

Communal Gardens / Ample Parking for residents and visitors

Highly desirable & convenient location within proximity to Bangor, Crawfordsburn & Helen's Bay

Range of amenities on your doorstep including beautiful coastal walks, golf clubs plus various shops, cafes and churches

## Location:

Travelling out of Bangor towards Crawfordsburn village turn left onto Wandsworth Road. Roseville Apartments are on the left-hand side.

## Property Comprises

### Ground Floor

CLOAKS/STORE CUPBOARD: Rail with shelving above.

LIVING ROOM: 15' 1" x 10' 10" (4.6m x 3.3m)

KITCHEN WITH DINING AREA; 11' 10" x 7' 10" (3.6m x 2.4m) Fitted kitchen with range of high and low level units, stainless steel sink with mixer tap and drainer, space for cooker, plumbed for washing machine, space for fridge freezer, part tiled walls.

BEDROOM (1): 11' 6" x 10' 6" (3.5m x 3.2m)

BEDROOM (2): 9' 2" x 9' 2" (2.8m x 2.8m) Built-in wardrobe.

SHOWER ROOM: Modern shower room comprising shower cubicle with mains shower unit, pedestal wash hand basin with mixer tap, low flush wc, part tiled walls, vinyl flooring.

RESIDENTS LOUNGE/TV ROOM WITH KITCHEN:

